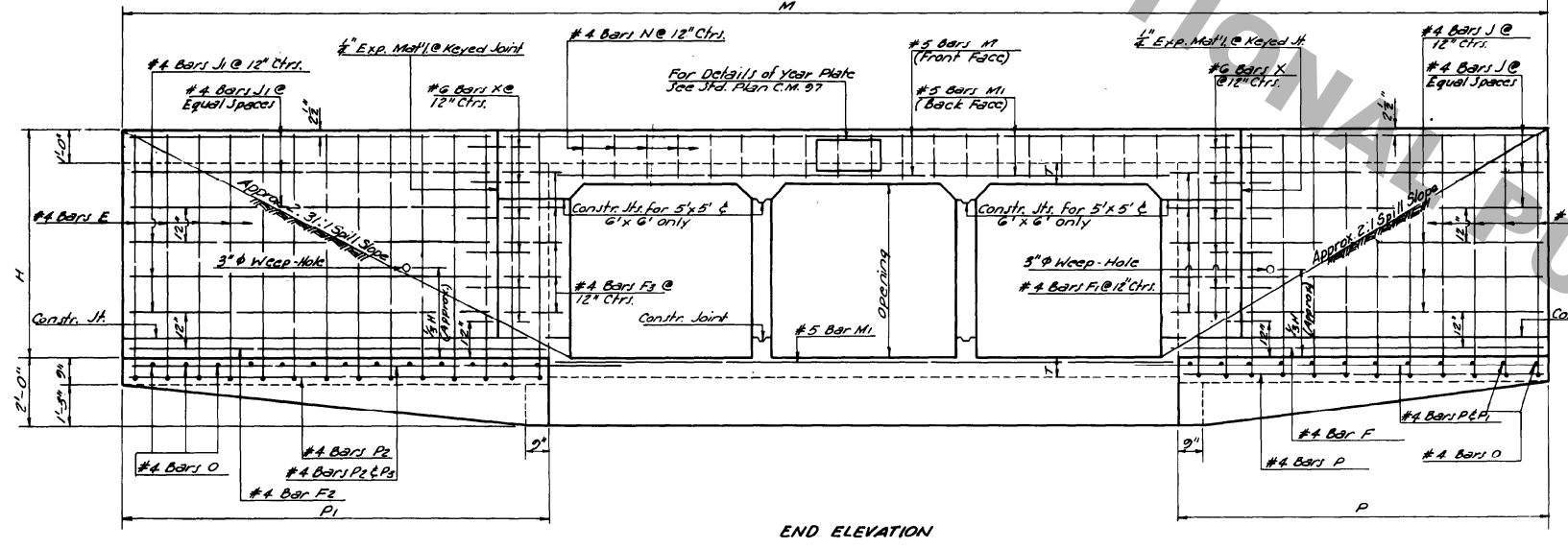
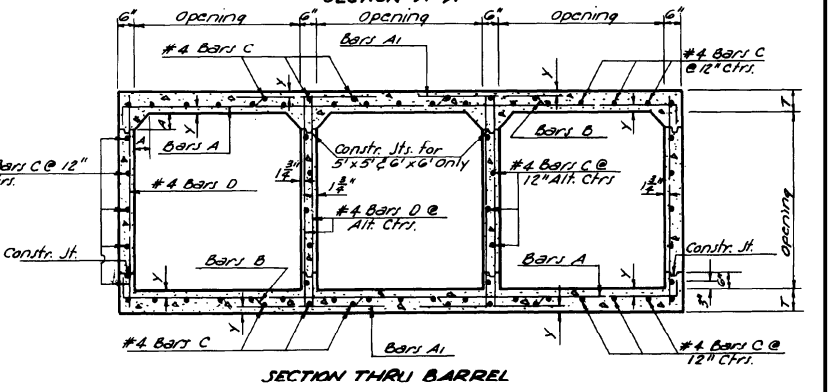
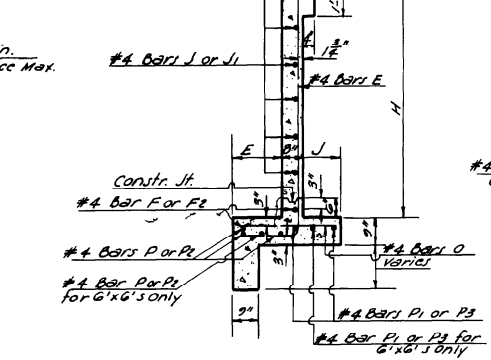
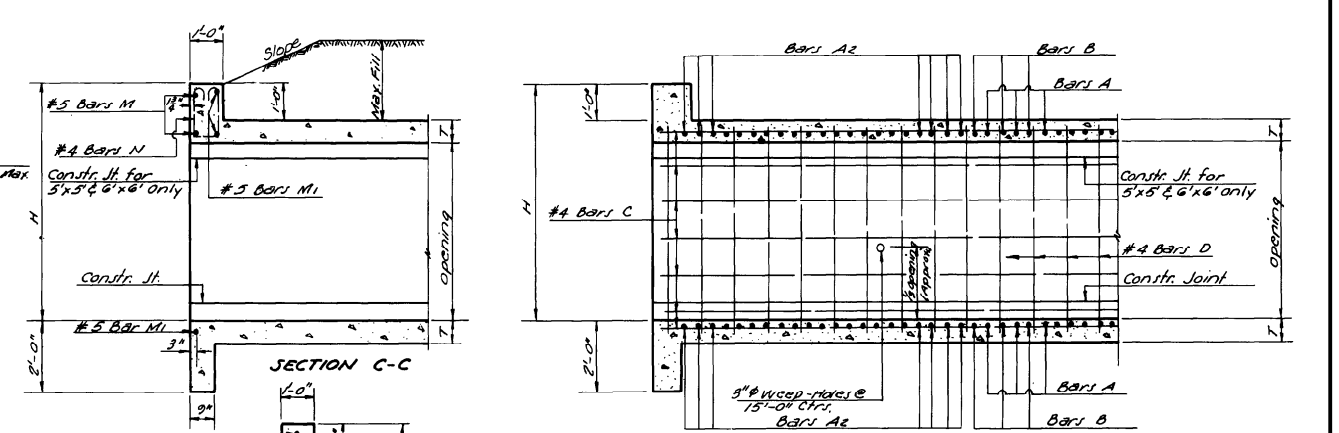
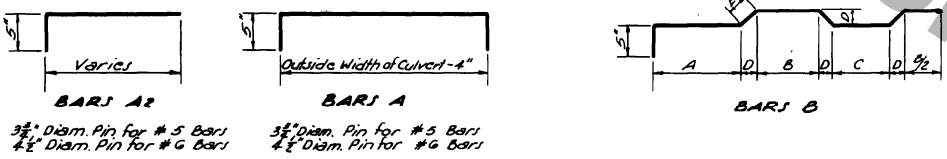


DIMENSIONS FOR BARS B

SIZE	A	B	C	D	E	
#4 x 1/2	5 1/2	3-3/4	2-2 1/2	1-8 1/2	3 1/2	4 3/4
#5 x 1/2	3 1/2	2-11/16	2-0 1/2	2-2 1/2	3 1/2	5 1/4
#6 x 1/2	4 1/4	4-7/8	3-3/4	2-7/8	4 1/2	6"

F2 = P1 + 5"
F3 = 1'-1 1/2"



DIMENSIONS

OPENINGS	MAX. FILL	BARREL	WINGS AND CURBS	QUANTITIES	
JZ	Nº	AREA	J A Y E J G H L Li P Pi M	PER LINEAR FOOT OF BARREL	
FT.	Nº	Sq. Ft.	ft.-in. ft.-in. ft.-in. ft.-in. ft.-in. ft.-in. ft.-in. ft.-in. ft.-in. ft.-in. ft.-in. ft.-in. ft.-in. ft.-in.	STEEL POUNDS	CONC. CU. YDS.

4x4, 5x5, 6x6

OPENINGS	MAX. FILL	BARREL	WINGS AND CURBS	QUANTITIES	OPENINGS		
JZ	Nº	AREA	J A Y E J G H L Li P Pi M	PER LINEAR FOOT OF BARREL	JZ		
FT.	Nº	Sq. Ft.	ft.-in. ft.-in. ft.-in. ft.-in. ft.-in. ft.-in. ft.-in. ft.-in. ft.-in. ft.-in. ft.-in. ft.-in. ft.-in. ft.-in.	STEEL POUNDS	CONC. CU. YDS.	Nº	FT.

BILL OF REINFORCING STEEL FOR 44'-0" CULVERT

BARREL REINFORCEMENT				WING AND CURB REINFORCEMENT																						
JZ	Nº	Length	Sp	BARS A	BARS A1	BARS A2	BARS B	#4 Bars C	#4 Bars D	#4 Bars E	#4 Bars F	#4 Bars F1	#4 Bars F2	#4 Bars F3	#4 Bars J	#4 Bars Ji	#4 Bars O	#4 Bars P	#4 Bars Pi	#4 Bars Pi	#4 Bars P3	#5 Bars M	#5 Bars Ni	#5 Bars Ni	#5 Bars X	
FT.	Nº	ft.-in.	ft.-in.	ft.-in.	ft.-in.	ft.-in.	ft.-in.	ft.-in.	ft.-in.	ft.-in.	ft.-in.	ft.-in.	ft.-in.	ft.-in.	ft.-in.	ft.-in.	ft.-in.	ft.-in.	ft.-in.	ft.-in.	ft.-in.	ft.-in.	ft.-in.	ft.-in.	ft.-in.	ft.-in.

C.C.S.M. 4-6-S-60-1

GENERAL NOTES:
CONSTRUCTION SPECIFICATIONS: Latest Approved La. Dept. of Highways Standard Specifications.
DESIGN SPECIFICATIONS: A.A.S.H.O. 1961 as Amended by Int. Spec. 1964.
LIVE LOAD: HS 20-44, or Military Loading, Whichever is Greater.
All Concrete to be Class 'A'.
All Exposed Corners to have 3/4" Chamfer, unless otherwise noted.
Reinforcement shall be Billet-Steel A.S.T.M. A.G15 or Rail-Steel A.S.T.M. A.G16 or A.S.T.M. A.G17.
Dimensions Relating to Reinforcing Steel are to Bar Centers.
A 1'-6" Square of Plastic Filler Cloth (See Qualified Products List) shall be placed in contact with Concrete behind each Weep Hole, in addition to approx. 2 Cu. Ft. of Concrete Sand.
For Detail of Joints, See Std. Plan C.M.-49.

**STANDARD PLAN
MULTIPLE OPENINGS
REINFORCED CONCRETE BOX CULVERTS
STRAIGHT WINGS
60° CROSSING
2:1 SPILL SLOPE NORMAL TO CHANNEL
4'x4' to 6'x6'**

APPROVED BY: [Signature]
DATE: 1-11-78
CHIEF ENGINEER

REVISIONS

NO.	REVISION	DATE	BY
1-11-78	Rev. Weep Hole Note	W.E.M.	
2-26-78	Rev. Spill Slope	W.E.M.	
4-21-78	Rev. General Notes for Steel	W.E.M.	
4-21-78	Rev. Add. Steel	W.E.M.	
12-14-64	Rev. 45° Spill to Military	W.E.M.	
1-11-78	Deleting Deleted 3 Spans	W.E.M.	
6-1-64	Rev. Dim. P. for 6x6s	W.E.M.	
4-13-64	REMOVED DIMENSIONS TO SMOOTH	W.E.M.	

DESIGNED: Q.A.H. DETAILED: J.H.A. TRACED: J.C. Williams
CHECKED: M.Y.Y. CHECKED: N.K. Brown CHECKED: W.C. Williams

STATE OF LOUISIANA
DEPARTMENT OF HIGHWAYS

DATE: Oct 16, 1962